

Empulse F35

Compatibility Guide for Rigid & Folding Wheelchairs

The **Empulse F35** is compatible with **rigid and folding wheelchairs** with integrated or removable footrests. To ensure its compatibility with your wheelchair, please follow the compatibility check guidance below.

** Sunrise Medical is not responsible for compatibility and alignment with competitor chairs and is not obligated to update compatibility information for competitor products. This guide provides recommendations for the required mounting hardware for specific wheelchairs, but evaluating the chair's configuration is essential to ensure full compatibility with the F35.*

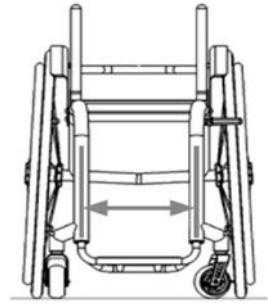
- **Back Wheel Size** - The F35 is compatible with all rear wheel sizes.
- **Camber** - The F35 is compatible with all cambers.
- **Front Casters** – The F35 is compatible with all caster sizes. The front casters will be raised off the ground when the F35 is attached.
- **Chair Widths** –
 - **0" inset:** 12" – 20" wide wheelchairs
 - **1" inset:** 14" – 20" wide wheelchairs
 - **2" inset:** 16" – 20" wide wheelchairs
- **Front Frame Mount** -
 - **Rigid Chairs:** The F35 needs a 1.5" (35mm) space on the front frame of a rigid chair for the mounting hardware. This section needs to be a straight section that does not curve or bend. If the chair has an inset, the mounting position must be below the inset. For chairs with low front seat heights, this may be below the caster link.



- Folding Chairs:** The F35 needs a 1.5" (35mm) section on either the front of the frame or on the bottom of the frame of the chair. This section needs to be a straight section that does not curve or bend.
 - The F35 **cannot** mount to any Swing Away Hanger/Footrest Assemblies.

- Choosing Front Frame Width on the Order Form**

- Measure:** Best practice is to measure the front frame width of the chair directly. Measure from the outside of one front frame tube to the inside of the opposite tube.
- If the chair is not available at the time of ordering,** estimate the width by using the seat width, subtracting the inset from each side, and subtract the frame tube diameter/width. Make sure to confirm the chair has a parallel front frame before using this method.

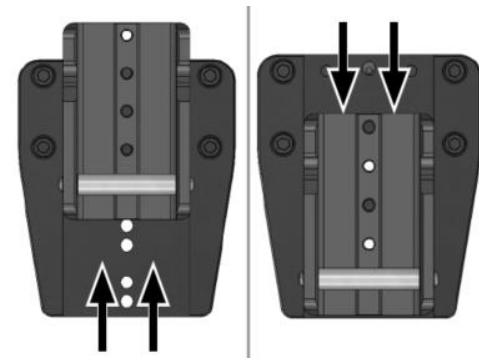


** The F35 mounting hardware comes customized for the chair it is ordered for based on the front frame width.*

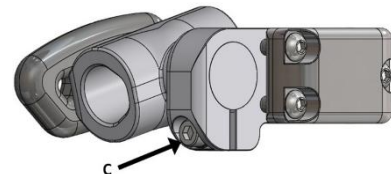
- Optimal Mounting Position:** The F35 angle for optimal performance is 80 degrees. To achieve this angle, a combination of adjustments is possible.

- Docking Clamp:** The docking clamp can be positioned down or inverted depending on where the F35 is mounted to the chair's frame. The angle can be adjusted by moving the docking bracket up or down the holes in the frame clamp. Each hole is an adjustment of approximately 2.5 degrees.

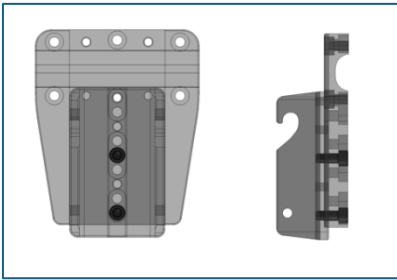
** Adjustments to the F35 Angle may affect the wheelchair's caster height; the casters must be lifted off the ground when the F35 is attached. The recommended height is 1.6" (40 mm).*



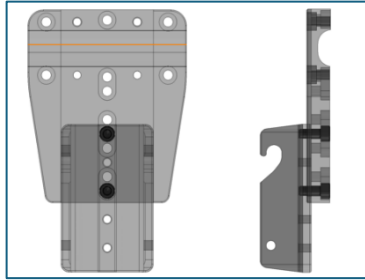
- Frame Clamp:** Bolt **C** can be used to adjust the angle of the F35 by loosening, adjusting, and re-tightening back to 15 Nm.



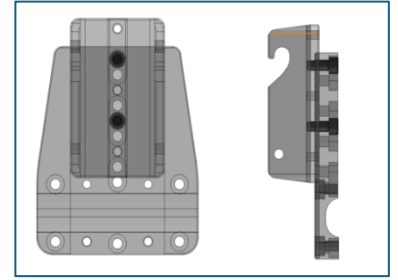
Example 1 – Standard high mount



Example 2 – Standard low mount



Example 3 – Inverted high mount



No-Go's

- Irregularly Shaped Frames: Frames that are not oval or round are not compatible with the F35.
- Tilt Chairs: Tilt-style chairs are not compatible with the F35.

Recommended No-Go's

- Carbon Frames: The clamping force of the F35 frame clamps can cause the frames to crack due to the clamping force.

RECOMMENDED MOUNTING HARDWARE BY WHEELCHAIR MODEL

Sunrise Medical is not responsible for compatibility and alignment with competitor chairs and is not obligated to update compatibility information for competitor products. This guide provides recommendations for the required mounting hardware for specific wheelchairs, but it is essential to evaluate the chair's configuration to ensure full compatibility with the Empulse F35.

RIGID WHEELCHAIRS:

Docking Clamps	Oval	Round .76" (19.5 mm) - 1.2" (30mm)	Round 1.25" (32mm)
Sunrise Medical			
Nitrum	X		
5R		X	
QRi		X	
GP		X	
RGK <i>For RGK compatibility, reach out to your local RGK representative.</i>			
Tiga		X	
Tiga Sub4		X	
Tiga FX		X	
Octane			X
Octane Sub4			X
Octane FX			X
HiLite		X	
MaxLite		X	
TiLite			
CR1	<i>No Go - Not compatible with the Empulse F35</i>		
TRA		X	
Aero T		X	
ZR			X
ZRA			X
Aero Z			X
TR		X	
Ki Mobility			
Ethos			X
Rogue 2	<i>Compatibility not available at this time</i>		
Rogue ALX	<i>Compatibility not available at this time</i>		
Motion Composites			
Apex C	<i>Not recommended due to the carbon fiber frame</i>		
Apex A			X

FOLDING WHEELCHAIRS:

Docking Clamps	Oval	Round .76" (19.5 mm) - 1.2" (30mm)	Round 1.25" (32mm)
Sunrise Medical			
Q2		X	
QS5 X		X	
Q2 Lite		X	
QX / QXi		X	
LX / LXi		X	
Q2 HP		X	
Xenon ²		X	
TiLite			
TiLite X		X	
Aero X		X	
2GX		X	
Ki Mobility			
Catalyst 5		X	
Catalyst 5Ti		X	
Catalyst 5Vx		X	
Catalyst 4		X	
Motion Composites			
Veloce	<i>Not recommended due to the carbon fiber frame</i>		
Helio C2	<i>Not recommended due to the carbon fiber frame</i>		
Helio A7	<i>Compatibility not available at this time</i>		
Helio A6	<i>Compatibility not available at this time</i>		