

SERIAL NO: \_\_\_\_\_

**AI**  
ALUMINIUM 7020



CE

**Customer Contact Details**

Customer Name: \_\_\_\_\_

RGK Genius: \_\_\_\_\_

Address: \_\_\_\_\_  
 \_\_\_\_\_  
 \_\_\_\_\_

Phone: \_\_\_\_\_

Email: \_\_\_\_\_

Ship to Customer Address:

Shipping Name: \_\_\_\_\_

Shipping Address: \_\_\_\_\_  
 \_\_\_\_\_  
 \_\_\_\_\_

Phone: \_\_\_\_\_

Email: \_\_\_\_\_

**Additional Information**

Notes: \_\_\_\_\_  
 \_\_\_\_\_  
 \_\_\_\_\_  
 \_\_\_\_\_

Current Wheelchair: \_\_\_\_\_

Customer Weight: \_\_\_\_\_

Customer Height: \_\_\_\_\_

Customer Disability: \_\_\_\_\_

**Other**

VAT Exemption Declaration (UK Only):  
 I declare that I am chronically sick or disabled by reason of:  
 \_\_\_\_\_  
 and that I am receiving from RGK Wheelchairs Ltd, the wheelchair specified herein and I claim relief from Value Added Tax under group 12 of schedule 8 to Value Added Tax Act 1994.  
 Signature: \_\_\_\_\_ Date: \_\_\_\_\_

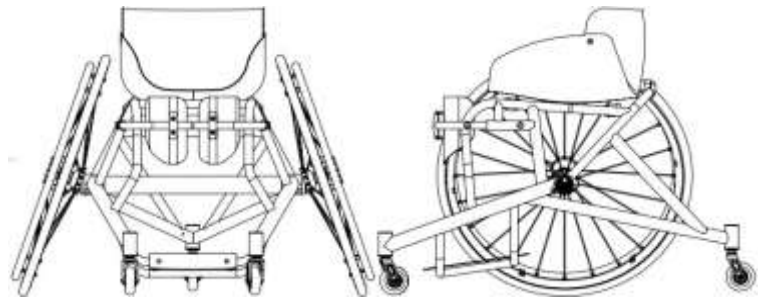
RGK Contact Authorisation:  
 From time to time, RGK would like to send you exclusive information, news and offers on everything RGK, by email or post. We will not pass any of your details to any third party.  
 I would like to be contacted by RGK:  
 Signature: \_\_\_\_\_ Date: \_\_\_\_\_

SERIAL NO: \_\_\_\_\_

Guide:  Base product  Required option  Optional Extra Critical Information Information Needed

**PRODUCT STYLE**

**GCAXZ010 GRANDSLAM CX**  
\$8,190.00



Max User Weight 125kg (275lbs)

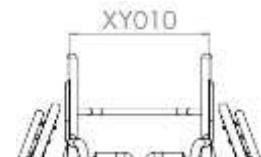
PLEASE NOTE: ALL RGK CHAIRS ARE HAND BUILT AND HAVE A MANUFACTURING MEASUREMENT TOLERANCE OF +/- 5MM

**CAD APPROVAL**

XW009	QUOTE ONLY (NO CAD FOR APPROVAL)	XW011	ORDER (NO CAD FOR APPROVAL)
\$0.00		\$0.00	
XW012	QUOTE CAD drawing for approval	XW010	ORDER CAD drawing for approval
\$483.00	(2 customer amendments ONLY)	\$298.00	(2 customer amendments ONLY)

**KEY FRAME MEASUREMENTS**

XY010 Seat width (Inside to inside of sideguards)  
 mm in (Max - 390mm)  
 (Min=270mm)



Select CX shell width (optional)

A-330mm	XY010 = 270-315	C-380mm	XY010 = 320-365
B-355mm	XY010 = 295-340	D-405mm	XY010 = 345-390

Note: CX Shell Seat Taper

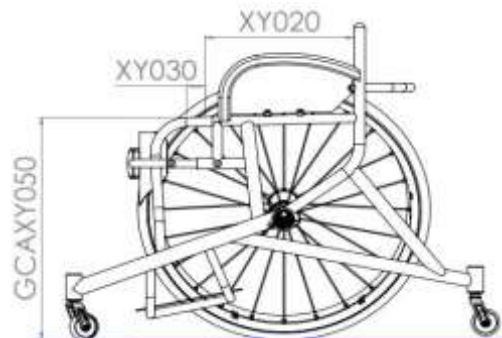
Seat Taper	Seat length (mm)				
	250	300	350	400	
330	305	280	255	230	
355	330	305	280	255	
380	355	330	305	280	
405	380	355	330	305	

Hard foam will be used to get Seat width

XY020 Seat length  
 mm in (Max - 500mm)

XY030 Extra seat length (not required with Knee support)

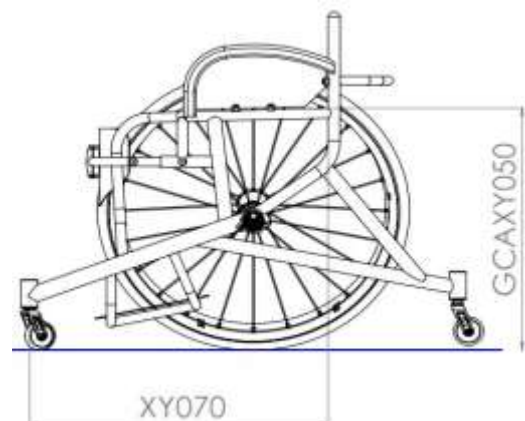
mm in



GCAXY050 Front seat height (Floor to middle of seat without cushion)  
 mm in (Max - 630mm)  
 (Min - 360mm)

GCAXY060 Rear seat height (Floor to middle of seat without cushion)  
 mm in (Max - 630mm)  
 (Min - 360mm)

XY070 Frame length  
 mm in (Min = XY020 + XY030 + 140mm)



**FRONT FRAME**

XY080 Seat taper design



Specify taper width

mm in



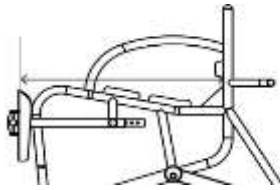
**Knee support options**

XA200 Knee support ratchet system  
(Tubes on the **outside** as std)



Specify length

mm in



XA203 Carbon fibre shin pads  
\$411.00 (Includes 7mm hard padding)

XA204 Extra padding for shin pads  
\$101.00



Specify padding thickness

mm in

Specify padding density

Medium Hard

**FOOTREST**

Footrest Type

GCAXB080 Fixed position footrest

**Footrest Measurements**

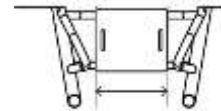
Front footrest height

mm in  
(min = 35mm)



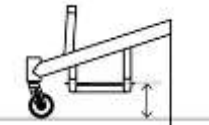
Footrest width

mm in  
(Std= 200mm)



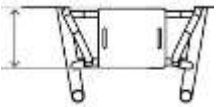
Rear footrest height

mm in  
(min = 35mm)



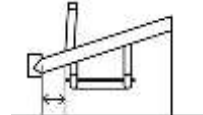
Footrest length

mm in  
(Std = 250mm)



Footrest position  
(front of footplate to castor pot)

mm in



**Footrest Plate**

XB190 Carbon fibre footplate  
\$264.00

XB100 ABS moulded foot tray  
\$155.00

GCAXB140 Spacer kit  
\$22.00 (Allows for 25mm increase in height)

Specify length  
mm in Max = 380mm (Full)  
Std = 330mm

**Footrest Plate Options**

XB240 Aluminium raised edges  
\$90.00 (Cost per Edge)

XB250 Carbon Fibre raised edge  
\$349.00 (1 side only)

Front Back Left Right

Front Back

Specify height  
mm in (Max = 60mm)

Specify height  
mm in (Max = 45mm)

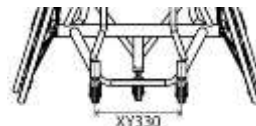
**Castor Pin Width**

XY330 Castor pin width



mm in

Optimise measurements



**CAMBER BAR AND ANTI-TIP**

Centre of Gravity and Camber Angle

GCAXY510 Fixed centre of gravity



Specify measurement  
mm in



XY390 Camber angle



18 20 22

Anti-tip options (Choose one)

GCAXJ040 Single fixed anti tip

Specify distance behind rear wheel  
mm in (Std = 100mm)



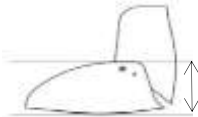
**CX SIDES**

Side Measurements

Sideguard height  
(std = 150mm)(follow tyre)(Max = 180)



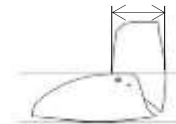
mm in



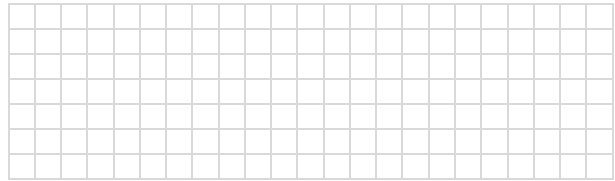
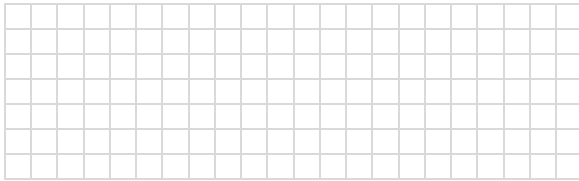
Backrest depth  
(std = 150mm)(Max = )



mm in



Individual Shape



**BACKREST**

Backrest Height (Choose One)

XY230 Fixed backrest height



Specify height  
mm in

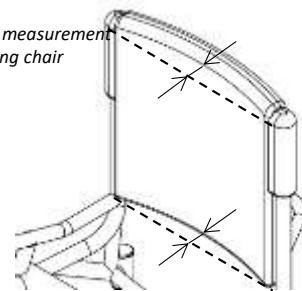
Backrest depth **top**  
(distance from front of back post to middle of upholstery)

mm in

Backrest depth **bottom**  
(distance from front of back post to middle of upholstery)

mm in

Note: Take measurement from existing chair



CASTOR AND REAR WHEELS								
Castor Options								
XC160	Sport 61mm castor <i>(Std, Black)</i>			XC181	Bones Reds bearings <i>(All castor bearings)</i>			
XC170	Sport 72mm castor <i>(Black)</i>			XC182	Bones Swiss Ceramic bearings <i>(All castor bearings)</i>			
					<b>\$335.00</b>			
Rear Wheel Size								
XY420	24" Wheels		XY430	25" Wheels		XY440	26" Wheels	
						XY450	700C Wheels	
Rear Wheel Gap								
XY460	Rear wheel gap			XY470	Inside to inside of wheel			
	15	20	25	30	<b>OR</b>		mm	in
	<i>Individual</i>	mm	in					
Rear Wheel Options								
XK080	Spinergy SLX 24 spoke <b>\$902.00</b>			XK521	Spinergy Ceramic bearing upgrade <b>\$288.00</b>			
XK100	Spinergy XSLX 24 spoke <b>\$951.00</b>							
<b>Spinergy Colour Options:</b>								
Black spokes	White spokes	Yellow spokes		XK180	Individual spoke design <b>\$211.00</b> <i>(Specify colour)</i>			
Red spokes	Blue spokes	Pink spokes			<i>Inside:</i>			
Purple spokes	Orange spokes	Green spokes			<i>Outside:</i>			
<b>Spinergy Anodise Options</b>								
XK190	Black hub <i>(std option)</i>	XK200	Silver hub <b>\$110.00</b>	XK201	Red hub/rims <b>\$329.00</b>	XK205	Individual hub/rims <b>\$395.00</b>	Select colour:
XK202	Purple hub/rims <b>\$329.00</b>	XK203	Blue hub/rims <b>\$329.00</b>	XK204	Gold hub/rims <b>\$329.00</b>			
Supply Without Wheels								
XK040	Supply without Wheels <b>-\$222.00</b>							
Handrim Position / Options								
XY480	Narrow set handrim			XY485	Wide set handrim			
XL090	Remove excess mounting tabs <b>\$122.00</b> <i>(recommended for small wheel gaps)</i>							
Handrim Style								
XL010	Aluminium hard anodised <b>6 tab</b>			XL040	Titanium 6 tab <b>\$289.00</b> <b>(Not with 700C)</b>			
XL130	Aluminium hard anodised <b>6 tab Painted</b> <b>\$81.00</b> <i>(Select Colour)</i>			XL100	Para grip 6 tab <b>\$341.00</b> <b>(Not with 700C)</b>			
XL070	Aluminium hard anodised <b>12 tab</b> <b>\$122.00</b> <b>(24" not available)</b>			XL020	Tetra Grip 6 tab <b>\$341.00</b>			
Tyre Options								
XM070	Kenda Kaliente	Red	Blue	XM080	Tufo MS3 tubeless <b>\$100.00</b> <i>(Blue only)</i>			
XM150	IRC Exeracer Pro <b>\$100.00</b> <i>(Red Only)</i>			XM095	Kenda Wide <b>\$43.00</b> <b>(Grey Only)</b>			
Spare Wheel								
GCAXK500	Spare wheel Spinergy <b>\$1,017.00</b> <i>(Built up + axle pin)</i>			XK523	Spare wheel upcharge - Individual Hubs/Rims <b>\$147.00</b>			
XK520	Spare wheel upcharge - Titanium Rims <b>\$236.00</b>			XK524	Spare wheel upcharge - Individual Spoke Colour <b>\$106.00</b>			
XK522	Spare wheel upcharge - Remove Excess Tabs <b>\$62.00</b>							
Inner Tube Valve Options								
XY500	Schraeder inner tube valve			XY490	Presta inner tube valve <i>(Standard if no option selected)</i>			

**FINISH OPTIONS**

Frame finish

XN010 Powder coated frame

Frame

**Gloss**

- Black gloss 103
- White gloss 100
- Grey gloss 132
- Cream gloss 135
- Red gloss 108
- Yellow gloss 120
- Forest green gloss 143
- Green gloss 107
- Dark blue gloss 151
- Royal blue gloss 154
- Blue gloss 174
- Duckegg blue gloss 141
- Pink gloss 188
- Orange gloss 180
- Purple gloss 157

Frame

**Matt**

- Black matt 105
- White matt 101
- Grey matt 131
- Light grey matt 133
- Navy blue matt 152

Frame

**Special**

- Chrome Mirror 300
- Sparkle silver 170
- Metallic black matt 104
- Metallic grey matt 130
- Black sandpaper 201
- Grey sandpaper 202
- White sandpaper 200

XN200 Individual paint colour (State Colour/RAL code)  
\$197.00

GCAAXN030 Brushed frame  
\$398.00

GCAAXN050 Polished frame  
\$1,054.00

Accent Colour

**Note:** Accent colour includes, forks, castor caps, and logo decals.



- Black accent
- Red accent
- Purple accent

- Silver accent
- Blue accent
- Carbon accent

XN250 Individual accent  
\$197.00

**(caps only, otherwise black)**



ADDITIONAL NOTES

**OFF SPEC REQUEST\*** *(please specify below the page number(s) and details to which the off spec request applies.*

**OFF SPEC REQUEST  
APPROVED** *(for internal  
RGK office only)*

X  
*RGK Internal Sign-off*

Off spec requests require a feasibility study which may increase order price and lead time. Any dimension/ option/ frame request not listed on the order form will be treated as an off spec request.\*

**Estimated MSRP\***